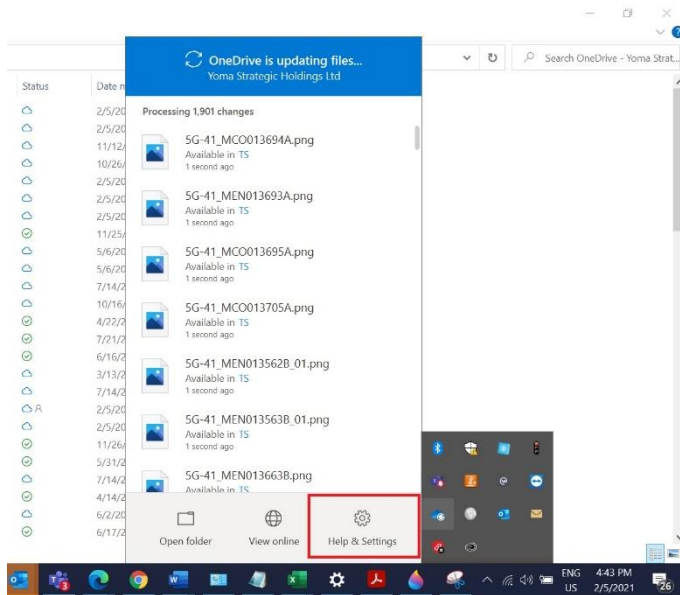
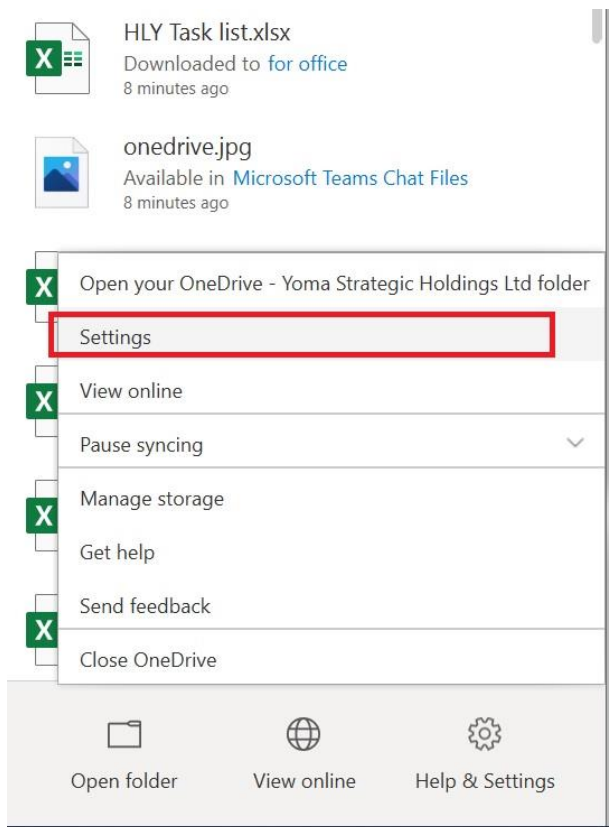


How to sync selected onedrive data to local Drive

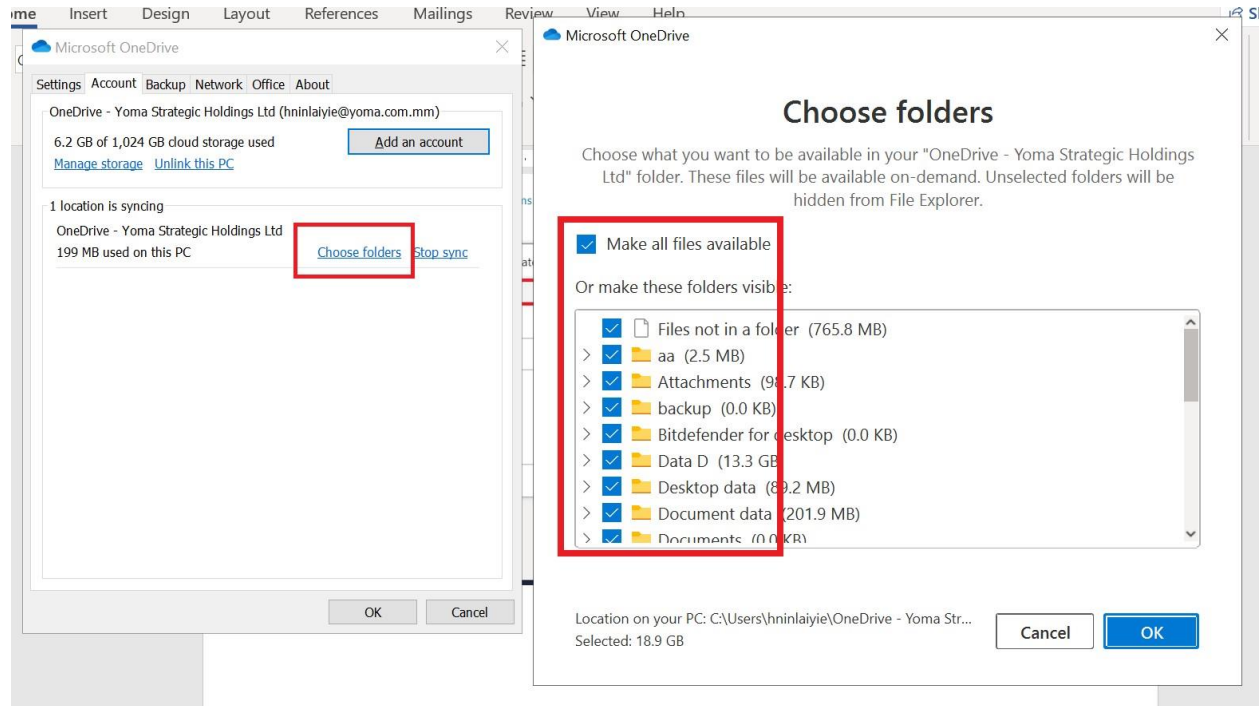
1. Go to OneDrive in system tray and right click on the onedrive icon and click on Help&setting.



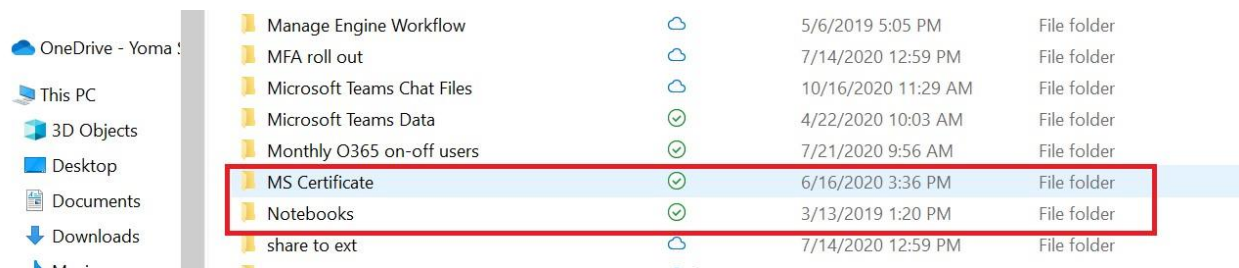
2. Click on setting.



Click on choose folders to synced for the selected data to be on your local drive. Unselected folders will be hidden from your local drive and work online only when you open Onedrive from browser.



Selected folders sync was finished the green icon will appear as the synchronization status to local drive.



When you open the folder same sync status will be shown.

